



# Operating Motel Real Estate & Business

14 N. State Street, Iola, Kansas



## SALE PRICE: \$1,650,000 | 18,694 SF MOTEL

### DEMOGRAPHICS

	1 mile	3 miles	5 miles
Estimated Population	3,387	6,149	7,078
Avg. Household Income	\$62,916	\$67,556	\$70,452

- 54 Room Hospitality Asset (\$34,629/Room)
- In Place Cash Flow from a mixture of Short and Long Term Stays
- Diverse Demand Drivers include:  
1.5 hours from Kansas City  
Walking distance from the [Southwind Rail Trail](#)  
15 minutes from [Humbolt Speedway](#)

[CLICK HERE TO VIEW MORE LISTING INFORMATION](#)

For More Information Contact: *Exclusive Agents*  
JOSH ROTHSCHILD | 816.412.7348 | [jrothschild@blockandco.com](mailto:jrothschild@blockandco.com)  
DANIEL BROCATO | 816.412.7303 | [dbrocato@blockandco.com](mailto:dbrocato@blockandco.com)



All information furnished regarding property for sale or lease is from sources deemed reliable, but no warranty or representation is made as to the accuracy thereof and the same is subject to errors, omissions, changes of prices, rental or other conditions, prior sale or lease or withdrawal without notice.

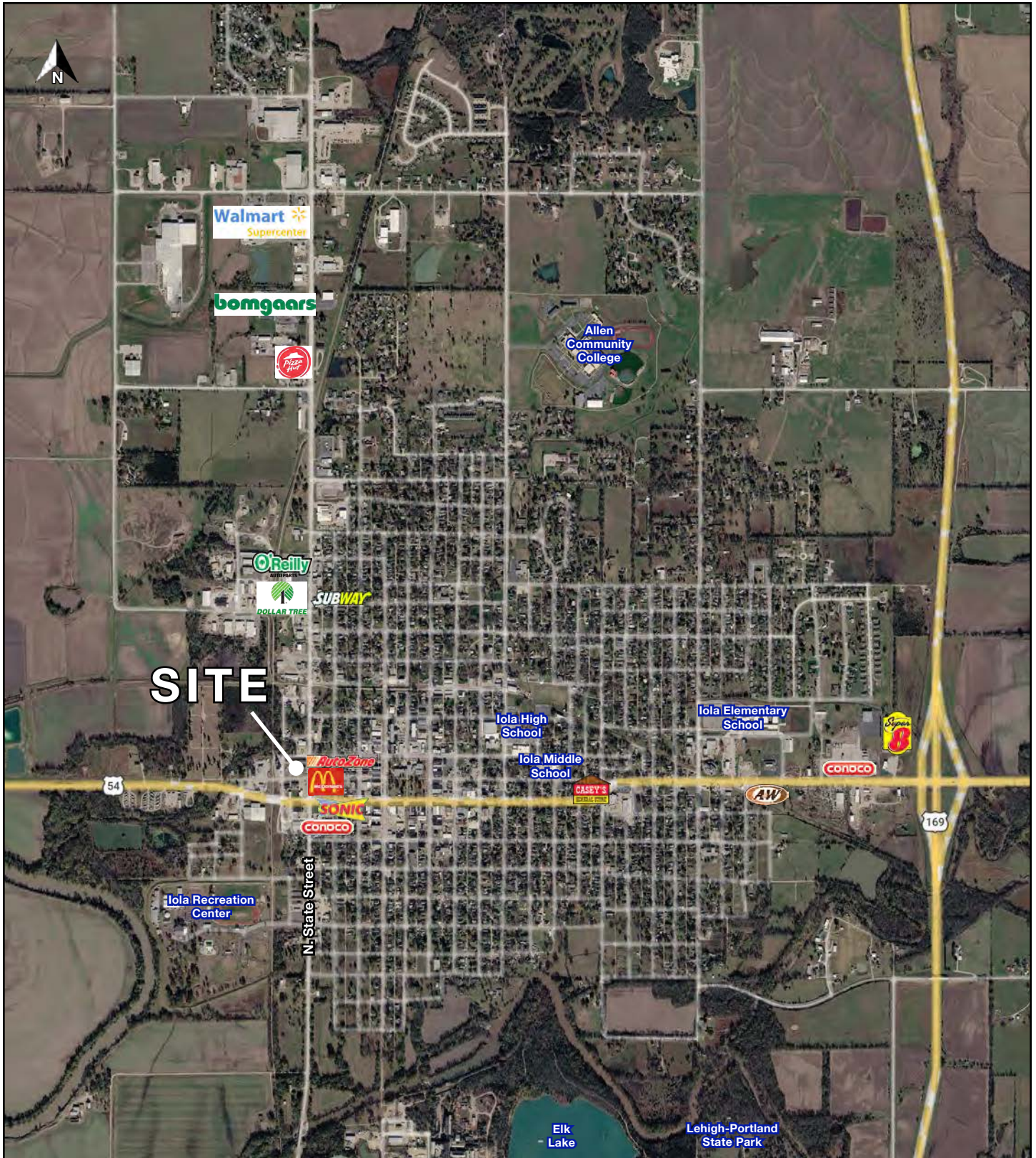
## PHOTOS



## AERIAL



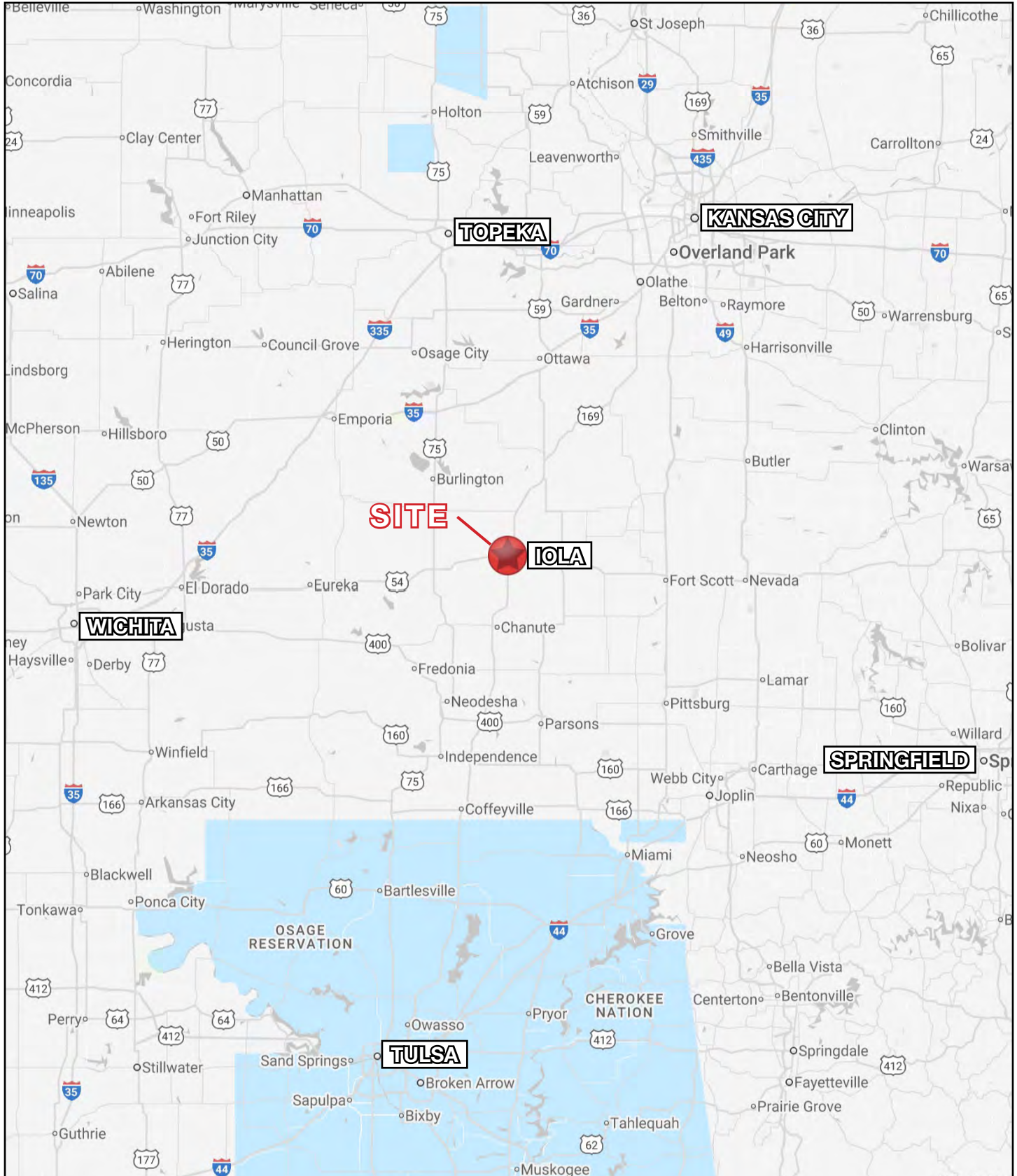
## AERIAL





# Operating Motel Real Estate & Business

## 14 N. State Street, Iola, Kansas





# Operating Motel Real Estate & Business

## 14 N. State Street, Iola, Kansas

14 N. State Street Iola, KS 66749	1 mi radius	3 mi radius	5 mi radius
<b>Population</b>			
2025 Estimated Population	3,387	6,149	7,078
2030 Projected Population	3,131	5,696	6,609
2020 Census Population	3,423	6,345	7,310
2010 Census Population	3,671	6,635	7,669
Projected Annual Growth 2025 to 2030	-1.5%	-1.5%	-1.3%
Historical Annual Growth 2010 to 2025	-0.5%	-0.5%	-0.5%
2025 Median Age	36.0	36.0	36.8
<b>Households</b>			
2025 Estimated Households	1,499	2,579	2,966
2030 Projected Households	1,375	2,352	2,716
2020 Census Households	1,510	2,665	3,064
2010 Census Households	1,580	2,717	3,130
Projected Annual Growth 2025 to 2030	-1.7%	-1.8%	-1.7%
Historical Annual Growth 2010 to 2025	-0.3%	-0.3%	-0.3%
<b>Race and Ethnicity</b>			
2025 Estimated White	90.0%	88.8%	89.4%
2025 Estimated Black or African American	2.3%	3.2%	2.9%
2025 Estimated Asian or Pacific Islander	1.2%	1.2%	1.2%
2025 Estimated American Indian or Native Alaskan	0.7%	0.8%	0.8%
2025 Estimated Other Races	5.7%	6.0%	5.7%
2025 Estimated Hispanic	4.5%	4.7%	4.5%
<b>Income</b>			
2025 Estimated Average Household Income	\$62,916	\$67,556	\$70,452
2025 Estimated Median Household Income	\$49,584	\$53,623	\$55,455
2025 Estimated Per Capita Income	\$27,964	\$28,729	\$29,863
<b>Education (Age 25+)</b>			
2025 Estimated Elementary (Grade Level 0 to 8)	2.2%	1.7%	1.6%
2025 Estimated Some High School (Grade Level 9 to 11)	7.7%	6.1%	5.8%
2025 Estimated High School Graduate	36.7%	37.3%	36.4%
2025 Estimated Some College	23.0%	23.1%	24.1%
2025 Estimated Associates Degree Only	8.3%	7.6%	8.1%
2025 Estimated Bachelors Degree Only	15.3%	17.0%	16.7%
2025 Estimated Graduate Degree	6.8%	7.1%	7.3%
<b>Business</b>			
2025 Estimated Total Businesses	199	288	295
2025 Estimated Total Employees	2,023	3,469	3,510
2025 Estimated Employee Population per Business	10.2	12.0	11.9
2025 Estimated Residential Population per Business	17.0	21.3	24.0

©2026, Sites USA, Chandler, Arizona, 480-491-1112 Demographic Source: Applied Geographic Solutions 11/2025, TIGER Geography - RS1